

domkapa

dk



# HANDCRAFTED ELEGANCE

From hulls to straps, down to the smallest detail, all materials used in the production of these pieces are 100% Portuguese. We pride ourselves on local production, supporting small suppliers, and therefore boosting the entire regional and national economy.

The quality of materials used, combined with our skilled professionals, make all the difference in the final result of Domkapa's collection. We draw on a rich history of ancestral manual production techniques, that we care to maintain to this day, combining them with the modern technologies we now have available. The result? Products carefully designed and produced by an expert team, with undeniable quality that survives the test of time.



NEW COLLECTION 2022

# JULIET

SOFA

Inspired by a concept of elegance, comfort, and intimacy, Juliet sofa is a rounded piece supported by four steel legs and tubing. Characterized by soft curves and balanced proportions, the backrest extends to the sides creating subtle and elegant armrests. The highlight of this piece is represented by the carefully upholstered slopes, emphasized by horizontal bands of haute-couture stitching.

A welcoming sofa with endless comfort and elevated when displayed in wine color leather. Perfect for contemporary projects.





JULIET SOFA



MARGOT BED



NEW COLLECTION 2022

# MARGOT

BED

Margot bed is a highly innovative bedroom solution linked to functional and essential shapes, resulting in a unique upholstered piece. The wide and enveloping headboard, with its soft lines and quality details, is divided into two padded sets to favor moments of rest in both domestic settings and public venues. The stunning metallic tubing and feet, here presented in Rose Gold steel, enhance the beauty of this piece from Domkapa's 2022 collection.

With a minimal and distinctive style, Margot bed promises to embrace every detail of your project and intensify them for the perfect decor.

NEW COLLECTION 2022

# GRANT

POUF

The construction of Grant pouf skillfully combines aesthetics and ergonomics to establish this as the go-to solution for every design project. Designed for various functions, Grant is available in three different sizes to accomplish the final look you've always dreamed of. It features elegant piping in each corner of the piece, gracefully matching the two contrast piping that carefully hugs the entire pouf.

Grant pouf is a classic and elegant shape without giving up ergonomic comfort.







NEW COLLECTION 2022

# RALPH

HANGER

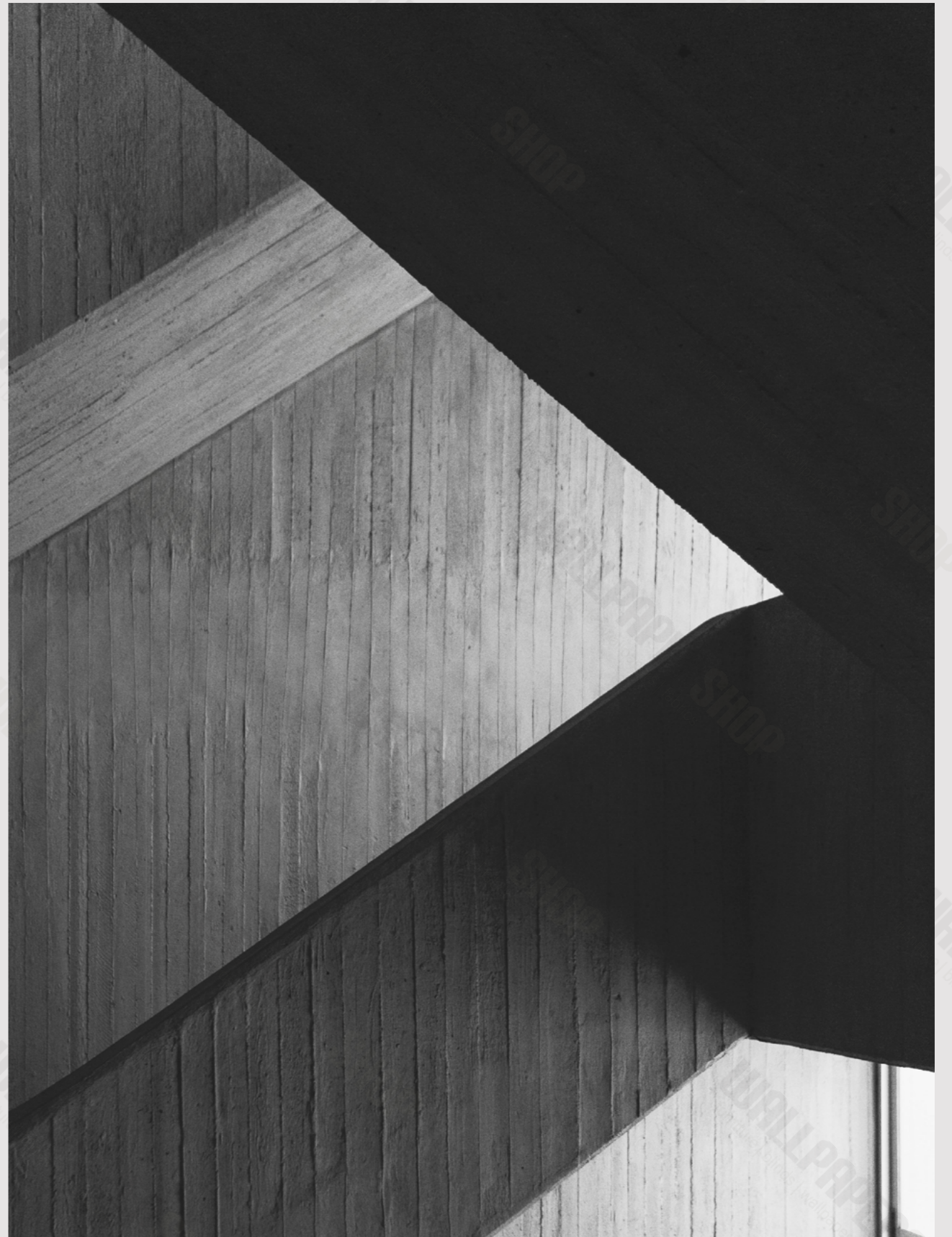
Distinguished by its three tall vertical tubes, Ralph is a minimalistic hanger with an industrial touch. These three tall tubes are connected by a T-shape metallic pipe on the top and bottom of the piece for incredible stability. The spotlight of this stunning design is the vintage style tray with leather detail that rotates 360°. This feature allows storage space for keys while complementing the hanger and enhancing the style of your project.

A fully metallic hanger with sophisticated design without losing the functional side demanded from a furniture piece.

*“I DON'T BELIEVE  
ARCHITECTURE HAS  
TO SPEAK TOO MUCH.  
IT SHOULD REMAIN  
SILENT AND LET  
NATURE IN THE  
GUISE OF SUNLIGHT  
AND WIND”*

---

TADAO ANDO







NEW COLLECTION 2022

# SHELBY

BED

The unique Shelby bed is a sophisticated bed inspired by the geometric lines, angles, and shapes that we all love. The upholstered frame and its clean-cut lines are complemented by the upholstered structure and its lines, ensuring a comfortable and refined piece. With its headboard slightly narrower at the top, this bed helps create the illusion of dimension, making your room look bigger.

A highly functional piece that guarantees perfect comfort while keeping your bedroom project harmonious and stylish.



SHELBY BED



SHELBY BED

NEW COLLECTION 2022

# RUTH

CHAIR

Inspired by a concept of grace, comfort, and sophistication, Ruth chair is distinguished by its soft shapes and sleek design.

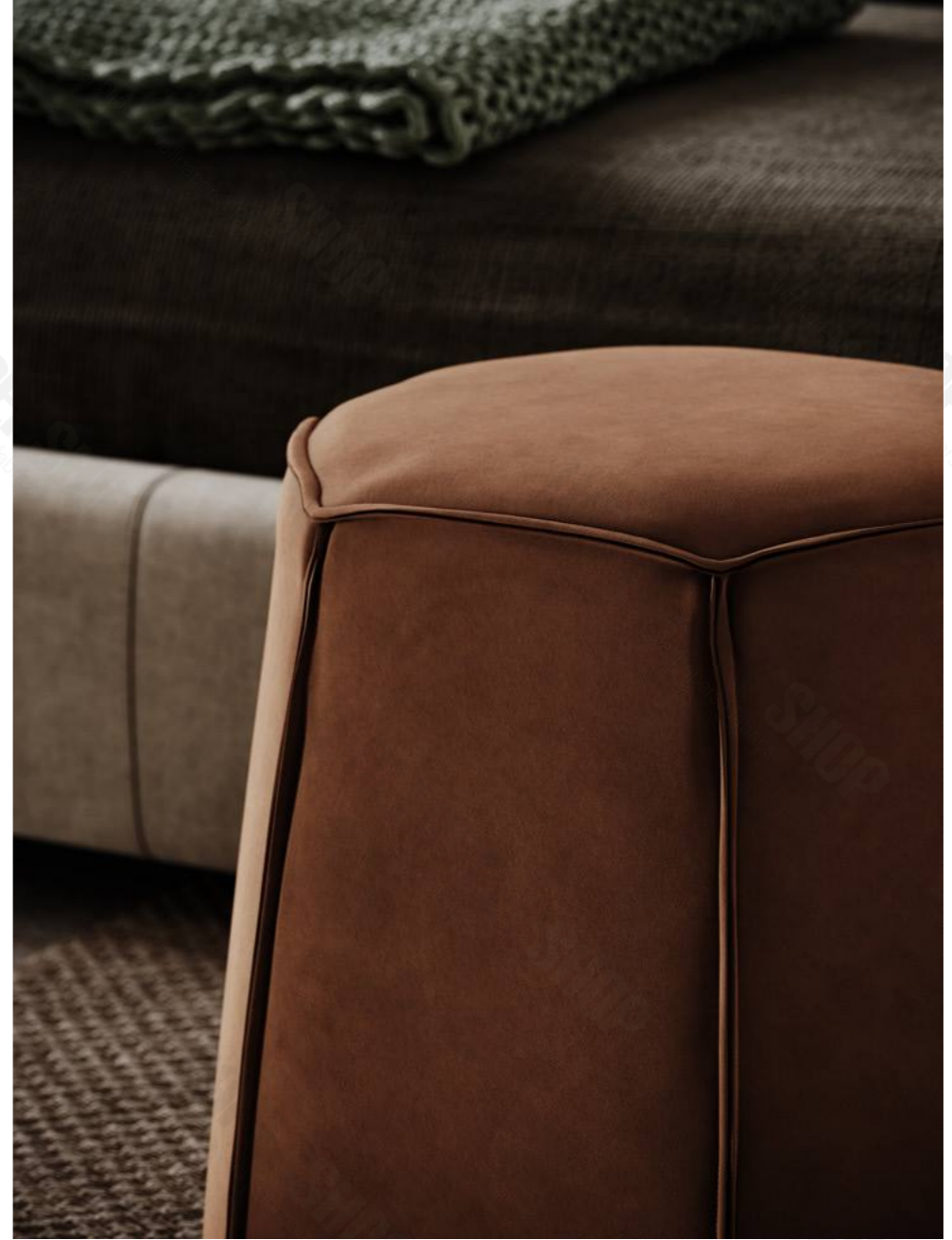
The wood frame and clean-cut lines are complemented by the ergonomic and convex backrest, covered in textiles or leather chosen from the wide range of Domkapa's collection. On the inner part of the back, two seams gracefully fall to join the seat cushion, resembling the beautiful silhouette of the human body.

Ruth is the perfect example of "less is more", giving attention to details while creating a timeless classic.





RUTH CHAIR



ANGLES POUF

# SOOTHING SHAPES









NEW COLLECTION 2022

# ALEXANDER

ARMCHAIR

Alexander is a highly innovative solution linked to a functional and quite traditional shape. A powerful and embracing structure where a high back smoothly connects to the seat cushion and ends on a swivel base. The arms and backrest on this piece slightly arch outwards, inviting everyone to sit. The highlight goes to the additional support padding in the back, held up by a metallic opulent counterweight, that can be adjusted in height and produced in a different finish.

This timeless armchair coordinates perfectly its materials in a one-of-a-kind piece, especially when presented in a cross-stitched seam.



ALEXANDER ARMCHAIR



NEW COLLECTION 2022

# PARKER

SOFA

The most recent addition to Domkapa's sofa collection, Parker expresses a straightforward aesthetics complemented by generous and welcoming proportions. Resting on slender metal feet, the wide armrest allows great comfort combined with the fully padded double cushions on the back. The back and seat of this sofa have one thing in common: geometric and elegant vertical lines that elongate the design for a contemporary piece.

Fitting in residential and contract projects, Parker sofa can match the need of multiple styles and demands.





GRANT POUF

INSIDE COFFEE TABLE



PARKER SOFA

ADA ALMOND CUSHION

INSIDE SIDE TABLE

# SHINE AND SHADOW







NEW COLLECTION 2022

# KELSI

BED

Kelsi is an outstanding design and handcraft work, combining unique production techniques and fine materials to create a rare piece.

The wingback headboard is the focal point of this bed, rich in details.

It features two large padded cushions for extreme comfort, supported by two lavish metallic tubes. Along with the structure, you can find other small details, the result of exclusive craftsmanship.

Available in three different sizes, Kelsi bed is customizable in shape, materials, and finishes to achieve the perfect result for your design project.





KELSI BED



PANTON SIDE TABLE



NEW COLLECTION 2022

# RUTH

ARMCHAIR

Ruth is a harmonious combination of various finishes conceived as an ideal seat both for residential and contract projects. The backrest and seat flow uninterruptedly into the armrest to create moments of great relaxation. The wooden base combines elegance and comfort. There are two lines stitched across the back for high resistance and slender design.

This piece can be combined with Ruth chair in open space concepts and contemporary design projects.



**KELSI BED**



**RUTH ARMCHAIR**



OPULENCE





NEW COLLECTION 2022

# CARTER

CHAIR

Carter chair with armrest is the perfect combination between traditional and contemporary lines, thickness, and delicacy.

This chair is characterized by a solid and yet comfortable seat cushion rested on a solid wood structure. Across the upholstered chair, double-top stitching divides the back of the piece for a timeless look.

A versatile chair with exclusive lines and stitching, ideal for homes settings and communities.



CARTER CHAIR









NEW COLLECTION 2022

# ANNA

CHAIR

This timeless chair design is the result of a mature awareness process inspired by different ideas and experiences. Available in four distinct versions, it includes two options for armrest customization (with or without armrest) as well as two customization options for the base (four legs or a sled base). Concerning the base, you can choose a wooden or metallic finish. Meanwhile, the upholstered seat and backrest can also be customized with contrasting fabrics.

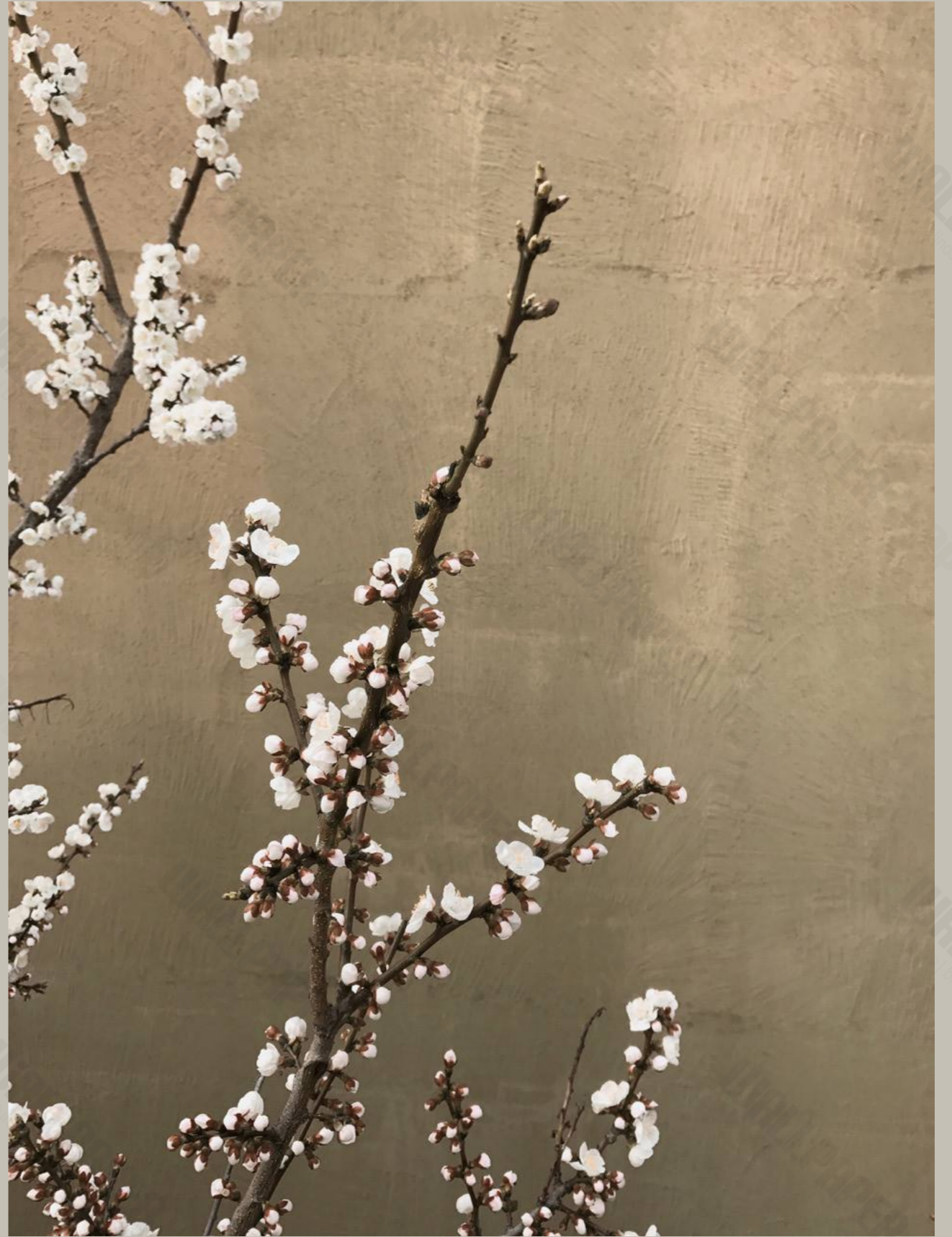
Anna chair is a playground piece for professionals, allowing endless customization options for limitless results.



ANNA CHAIR



NATURE  
EXPANSE





NEW COLLECTION 2022

# COLBERT

BENCH

Colbert is a discreet and elegant bench perfect for contemporary settings. With a fully upholstered seat, it features both delicate single and double-top stitching as a touch of luxury. Colbert is also characterized by an intricate metallic t-shape base with four metal legs. The oval extended shape of the seat beautifully contrasts with the raw materials and lines of the structure.

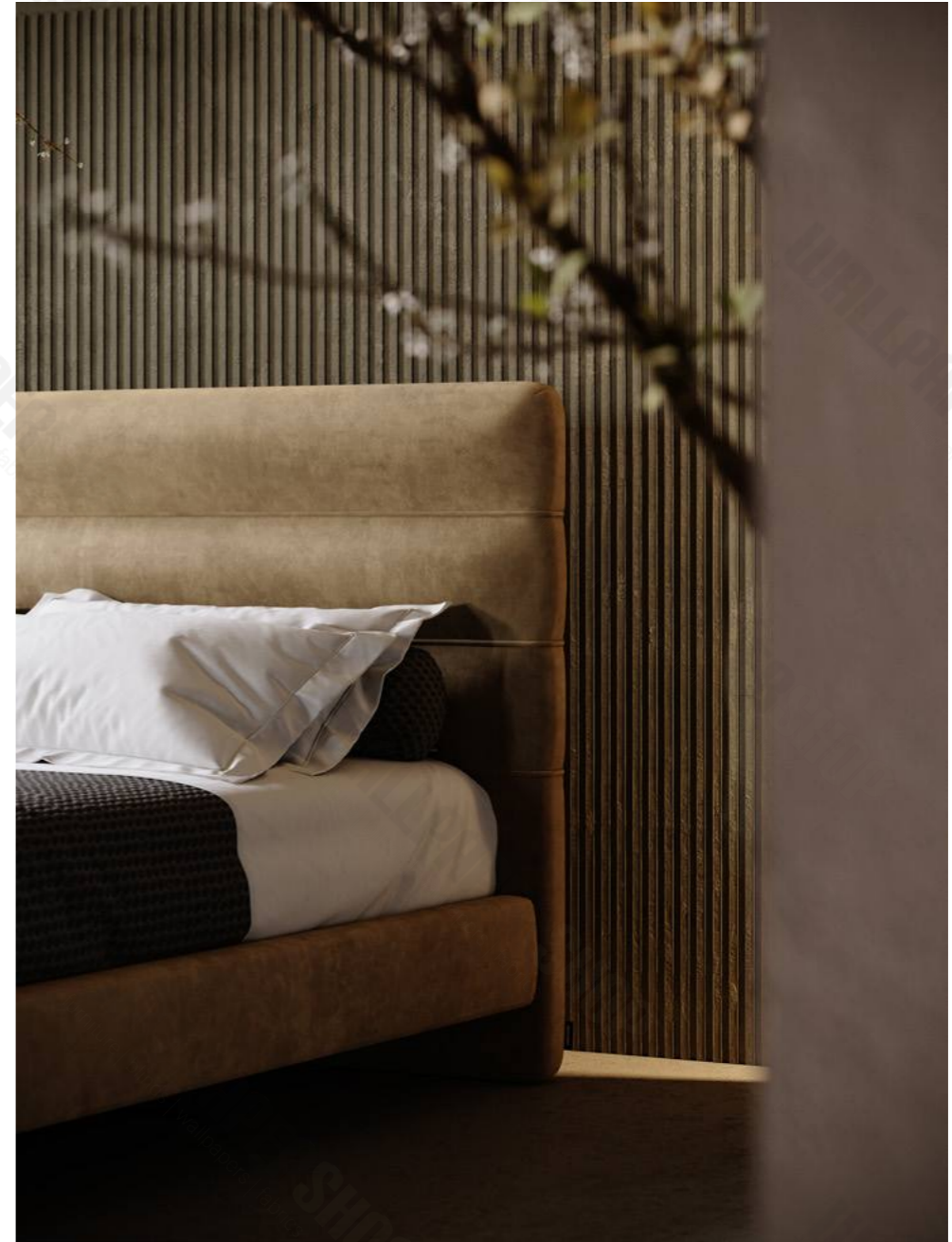
This refined complementary piece goes along well alone or with any bed, combining functionality and style.





YUMI BED

COLBERT BENCH



YUMI BED



RALPH HANGER



ZIGZAG POUF

RALPH HANGER







ECHO BED

MANO SIDE TABLE

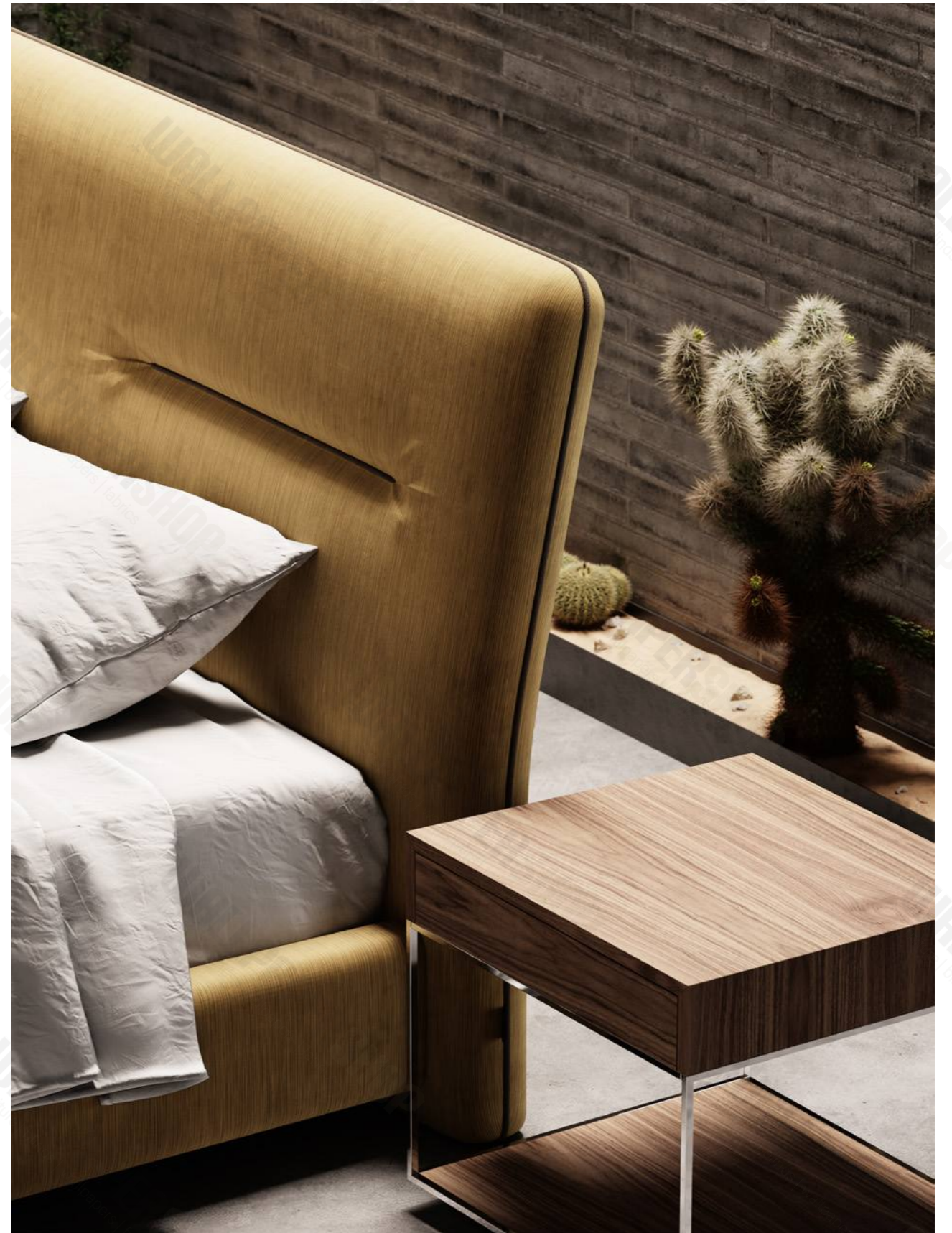


ELBA ARMCHAIR





GRANT POUF



HELEN BED

GRAZI NIGHTSTAND





MEGAN ARMCHAIR



TAYLOR DRESSER



# ORGANIC ELEMENTS





SHINTO MODULAR SOFA



INSIDE SIDE TABLE





LOW POUF

CLEO MIRROR



SHINTO MODULAR SOFA

INSIDE COFFEE TABLE





EDISON ARMCHAIR



PANTON SIDE TABLE

CHLOE SOFA



CHLOE SOFA

PANTON COFFEE TABLE



RACHEL POUF





STELLA SOFA

ADA ALMOND CUSHION

MANO COFFEE TABLE



STELLA SOFA



MANO COFFEE TABLE

PEARL ARMCHAIR

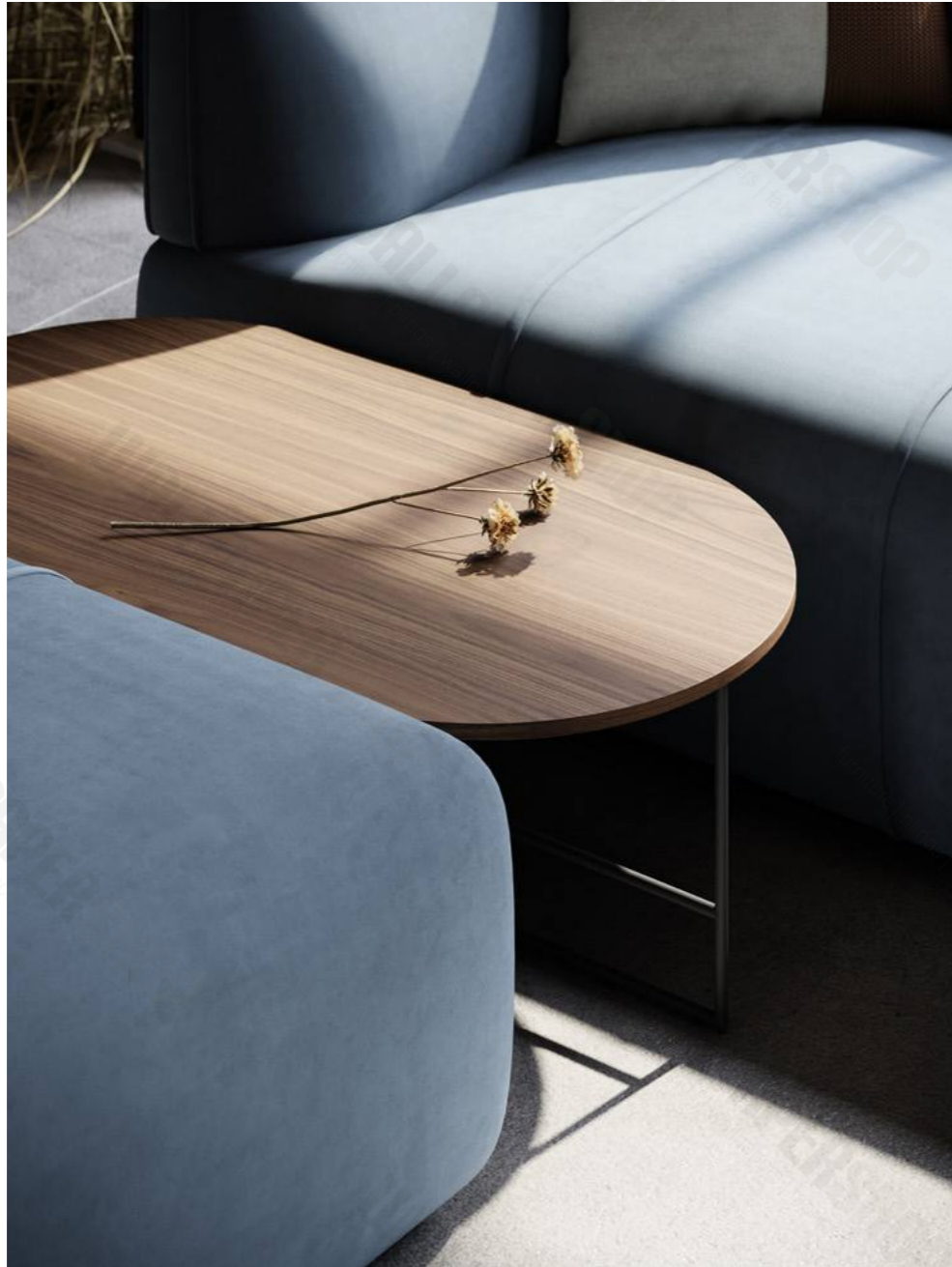


STELLA SOFA

MANO COFFEE TABLE







INSIDE COFFEE TABLE



INSIDE SIDE TABLE

DISRUPTION MODULAR SOFA

INSIDE COFFEE TABLE



INSIDE COFFEE TABLE

ADA ALMOND CUSHION

DISRUPTION MODULAR SOFA



KATE POUF





**LEGACY** ARMCHAIR



**INSIDE** SIDE TABLE

**NICOLE** SOFA

**ADA ROSE** CUSHION





ESSENTIAL CHAIR





GRETA ARMCHAIR







LOW POUF



TAIS SOFA

ADA ROSE CUSHION



PANTON SIDE TABLE



PANTON COFFEE TABLE





MILLER ARMCHAIR



ANISTON SOFA





EVA ARMCHAIR



INSIDE COFFEE TABLE

INSIDE SIDE TABLE



EVA CHAIR







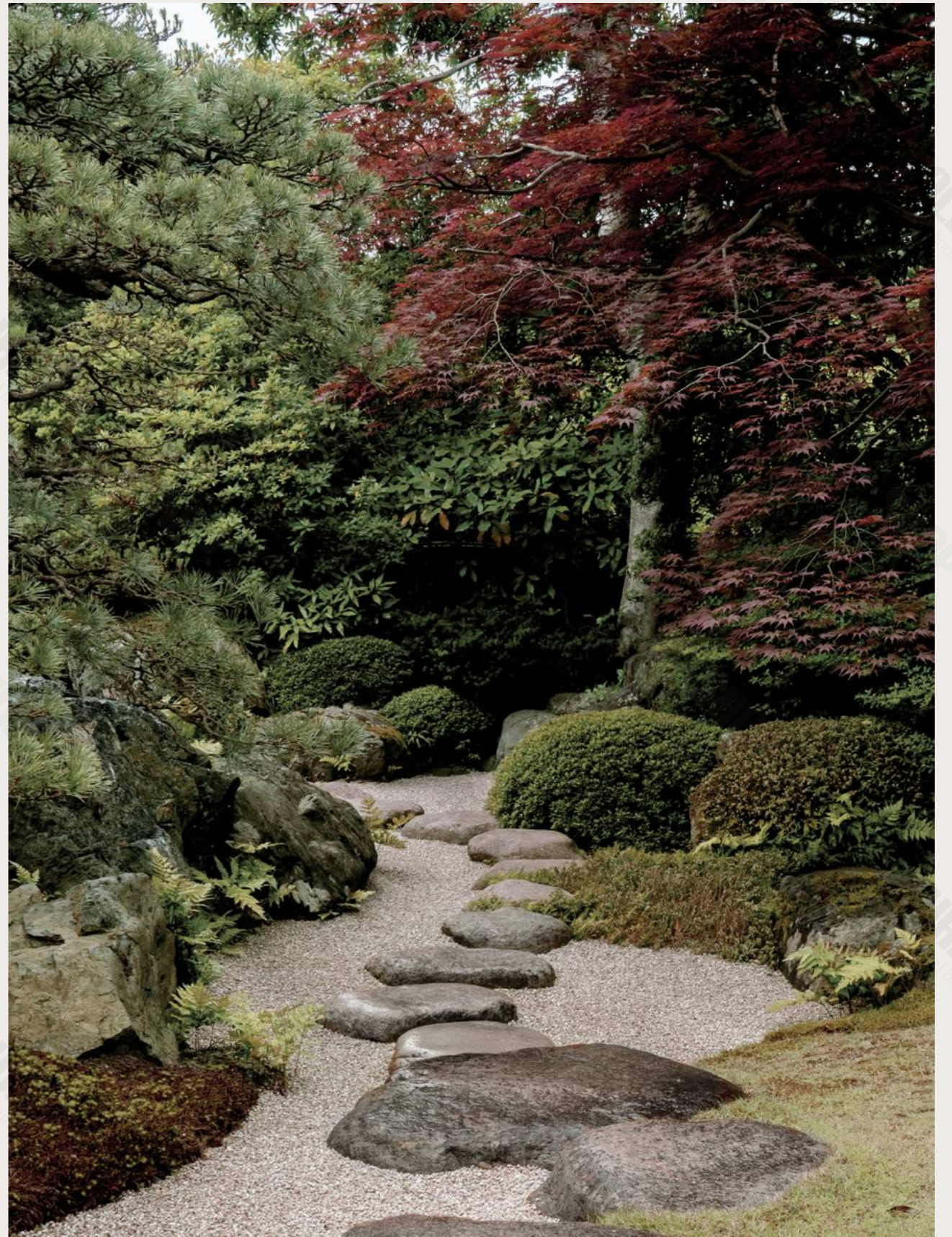


STRANGER ARMCHAIR

*“WE SHOULD ATTEMPT  
TO BRING NATURE,  
HOUSES, AND HUMAN  
BEINGS TOGETHER  
IN A HIGHER UNITY”*

---

LUDWIG MIES VAN DER ROHE







LOUISE COUNTER CHAIR



LOUISE CHAIR





GRAM CHAIR







VIANNA CHAIR WITH ARMREST









CAMILLE COUNTER CHAIR



CAMILLE CHAIR





STRANGER CHAIR



STRANGER COUNTER CHAIR



GRAM COUNTER CHAIR





EVA COUNTER CHAIR

# PRODUCT INDEX

# SOFAS

NEW



## JULIET

DIMENSIONS W2000 X D820 X H730 MM

APPEARS ON PAGES 7, 9, 10

NEW



## PARKER

DIMENSIONS\* W2300 X D1100 X H820 MM

APPEARS ON PAGES 32, 33, 39, 41



## CHLOE

DIMENSIONS\* W3000 X D1000 X H755 MM

APPEARS ON PAGES 98, 99, 101, 102

\*AVAILABLE ON THE FOLLOWING SIZES: 2 SEATER, 3 SEATER AND CHAISE LONGUE



## DISRUPTION

DIMENSIONS\* W4000 X D2800 X H800 MM

APPEARS ON PAGES 110, 111, 113, 114

\*MODULAR SYSTEM AVAILABLE WITH VARIOUS MODULES

# SOFAS



## SHINTO

DIMENSIONS\* W3000 X D1620 X H820 MM

APPEARS ON PAGES 92, 93, 94, 97

\*MODULAR SYSTEM AVAILABLE WITH VARIOUS MODULES



## TAIS

DIMENSIONS\* W2300 X D950 X H880 MM

APPEARS ON PAGES 126, 127, 129, 130, 131

\*AVAILABLE ON THE FOLLOWING SIZES: 2 SEATER, 3 SEATER AND CHAISE LONGUE



## NICOLE

DIMENSIONS\* W2300 X D1050 X H900 MM

APPEARS ON PAGES 116, 117, 119

\*AVAILABLE ON THE FOLLOWING SIZES: 1 SEATER, 2 SEATER, 3 SEATER AND POUF



## ANISTON

DIMENSIONS\* W3200 X D1810 X H830 MM

APPEARS ON PAGES 132, 133, 135

\*AVAILABLE ON THE FOLLOWING SIZES: 2 SEATER, 3 SEATER AND CHAISE LONGUE



# SOFAS

## STELLA



DIMENSIONS	W2930 X D1570 X H840 MM
APPEARS ON PAGES	104, 105, 106, 107, 109

THE DIMENSIONS AND OTHER TECHNICAL ASPECTS OF THE PIECES MAY BE CHANGED WITHOUT PRIOR NOTICE. FOR MORE DETAILED AND UPDATED INFORMATION, PLEASE DOWNLOAD THE PRODUCT TECHNICAL SHEET ON THE WEBSITE

# ARMCHAIRS

## ALEXANDER



DIMENSIONS	W880 X D900 X H960 MM
APPEARS ON PAGES	32, 33, 34, 36, 37

## RUTH



DIMENSIONS	W820 X D800 X H770 MM
APPEARS ON PAGES	44, 50, 53

## EDISON



DIMENSIONS	W710 X D880 X H800 MM
APPEARS ON PAGES	98, 100

## MILLER



DIMENSIONS	W820 X D830 X H650 MM
APPEARS ON PAGES	133, 134

THE DIMENSIONS AND OTHER TECHNICAL ASPECTS OF THE PIECES MAY BE CHANGED WITHOUT PRIOR NOTICE. FOR MORE DETAILED AND UPDATED INFORMATION, PLEASE DOWNLOAD THE PRODUCT TECHNICAL SHEET ON THE WEBSITE

# ARMCHAIRS



## STRANGER

DIMENSIONS	W720 X D770 X H820 MM
APPEARS ON PAGES	142, 143, 144, 145



## LEGACY

DIMENSIONS	W700 X D740 X H750 MM
APPEARS ON PAGES	117, 118



## EVA

DIMENSIONS	W680 X D780 X H870 MM
APPEARS ON PAGES	136, 138, 139



## GRETA

DIMENSIONS*	W730 X D860 X H1050 MM
APPEARS ON PAGES	120, 124, 125

- \*AVAILABLE ON LOWER VERSION
- \*AVAILABLE WITH PAIRABLE FOOTREST

# ARMCHAIRS



## PEARL

DIMENSIONS	W880 X D820 X H780 MM
APPEARS ON PAGES	105, 108



## MEGAN

DIMENSIONS	W680 X D760 X H710 MM
APPEARS ON PAGES	87, 88



## ELBA

DIMENSIONS*	W870 X D880 X H1000 MM
APPEARS ON PAGES	78, 81

- \*AVAILABLE WITH PAIRABLE FOOTREST

# BEDS

NEW



## SHELBY

DIMENSIONS*	W1800 X D2300 X H1090 MM
MATTRESS SIZE	2000 X 1600 MM
APPEARS ON PAGES	21, 22, 24, 25

\*AVAILABLE WITH VARIOUS MATTRESS SIZES

NEW



## KELSI

DIMENSIONS*	W1760 X D2250 X H950 MM
MATTRESS SIZE	2000 X 1600 MM
APPEARS ON PAGES	45, 46, 48, 49, 52

\*AVAILABLE WITH VARIOUS MATTRESS SIZES

NEW



## MARGOT

DIMENSIONS*	W1850 X D2330 X H915 MM
MATTRESS SIZE	2000 X 1600 MM
APPEARS ON PAGES	6, 11, 12

\*AVAILABLE WITH VARIOUS MATTRESS SIZES

## HELEN

DIMENSIONS*	W2190 X D2300 X H1230 MM
MATTRESS SIZE	2000 X 1800 MM
APPEARS ON PAGES	82, 83, 85

\*AVAILABLE WITH VARIOUS MATTRESS SIZES

THE DIMENSIONS AND OTHER TECHNICAL ASPECTS OF THE PIECES MAY BE CHANGED WITHOUT PRIOR NOTICE. FOR MORE DETAILED AND UPDATED INFORMATION, PLEASE DOWNLOAD THE PRODUCT TECHNICAL SHEET ON THE WEBSITE

# BEDS

## ECHO

DIMENSIONS*	W2060 X D2305 X H1150 MM
MATTRESS SIZE	2000 X 1800 MM
APPEARS ON PAGES	79, 80

\*AVAILABLE WITH VARIOUS MATTRESS SIZES

## YUMMI

DIMENSIONS*	W2010 X D2210 X H1120 MM
MATTRESS SIZE	2000 X 1800 MM
APPEARS ON PAGES	71, 74, 75

\*AVAILABLE WITH VARIOUS MATTRESS SIZES

## AMANDA

DIMENSIONS*	W3090 X D2170 X H930 MM
MATTRESS SIZE	2000 X 1800 MM
APPEARS ON PAGES	86

\*AVAILABLE WITH VARIOUS MATTRESS SIZES

THE DIMENSIONS AND OTHER TECHNICAL ASPECTS OF THE PIECES MAY BE CHANGED WITHOUT PRIOR NOTICE. FOR MORE DETAILED AND UPDATED INFORMATION, PLEASE DOWNLOAD THE PRODUCT TECHNICAL SHEET ON THE WEBSITE

# CHAIRS

NEW



## CARTER

DIMENSIONS	W620 X D630 X H860 MM
APPEARS ON PAGES	56, 57, 58, 60, 61

NEW



## RUTH

DIMENSIONS	W630 X D580 X H820 MM
APPEARS ON PAGES	20, 27, 28

NEW



## ANNA

DIMENSIONS	
CHAIR	W560 X D570 X H850 MM
CHAIR WITH ARMRESTS	W560 X D570 X H850 MM
APPEARS ON PAGES	62, 63, 64, 66, 67

AVAILABLE WITH SLED METALLIC BASE

NEW



## LOUISE

DIMENSIONS	W520 X D570 X H820 MM
APPEARS ON PAGES	148, 151

THE DIMENSIONS AND OTHER TECHNICAL ASPECTS OF THE PIECES MAY BE CHANGED WITHOUT PRIOR NOTICE. FOR MORE DETAILED AND UPDATED INFORMATION, PLEASE DOWNLOAD THE PRODUCT TECHNICAL SHEET ON THE WEBSITE

# CHAIRS



## STRANGER

DIMENSIONS	W670 X D650 X H910 MM
APPEARS ON PAGES	165, 166



## ESSENTIAL

DIMENSIONS	W510 X D560 X H860 MM
APPEARS ON PAGES	121, 122, 123

## VIANNA

DIMENSIONS	
CHAIR	W620 X D660 X H850 MM
CHAIR WITH ARMRESTS	W530 X D650 X H850 MM
APPEARS ON PAGES	156, 157, 158, 159



## EVA

DIMENSIONS	
CHAIR	W570 X D530 X H860 MM
CHAIR WITH ARMRESTS	W460 X D530 X H810 MM
APPEARS ON PAGES	137, 140, 141



THE DIMENSIONS AND OTHER TECHNICAL ASPECTS OF THE PIECES MAY BE CHANGED WITHOUT PRIOR NOTICE. FOR MORE DETAILED AND UPDATED INFORMATION, PLEASE DOWNLOAD THE PRODUCT TECHNICAL SHEET ON THE WEBSITE

# CHAIRS



## CAMILLE

DIMENSIONS	W570 X D570 X H810 MM
APPEARS ON PAGES	160, 161, 163



## GRAM

DIMENSIONS	W440 X D540 X H860 MM
APPEARS ON PAGES	152, 153, 154, 155

# BAR & COUNTER CHAIRS

NEW



## LOUISE

DIMENSIONS	
BAR CHAIR	W510 X D480 X H980 MM
COUNTER CHAIR	W510 X D480 X H830 MM
APPEARS ON PAGES	149, 150



## EVA

DIMENSIONS	
BAR CHAIR	W460 X D470 X H1100 MM
COUNTER CHAIR	W460 X D470 X H955 MM
APPEARS ON PAGES	170, 171



## CAMILLE

DIMENSIONS	
BAR CHAIR	W530 X D520 X H1010 MM
COUNTER CHAIR	W530 X D520 X H860 MM
APPEARS ON PAGES	160, 161, 162



## GRAM

DIMENSIONS	
BAR CHAIR	W440 X D450 X H950 MM
COUNTER CHAIR	W440 X D450 X H820 MM
APPEARS ON PAGES	168, 169

# BAR & COUNTER CHAIRS



## STRANGER

### DIMENSIONS

BAR CHAIR	W620 X D650 X H1200 MM
COUNTER CHAIR	W620 X D650 X H1050 MM

APPEARS ON PAGES	164, 167
------------------	----------

# STOOLS



## GRANT

### DIMENSIONS

GRANT S	W450 X D450 X H400 MM
GRANT M	W940 X D450 X H400 MM
GRANT L	W940 X D940 X H400 MM

APPEARS ON PAGES	7, 15, 32, 40, 41, 82, 84, 137
------------------	--------------------------------

## ZIGZAG

### DIMENSIONS

W500 X D500 X H450 MM

APPEARS ON PAGES	70, 77
------------------	--------



## KATE

### DIMENSIONS

KATE S	W480 X D480 X H450 MM
KATE L	W900 X D900 X H450 MM

APPEARS ON PAGES	111, 115
------------------	----------



## ANGLES

### DIMENSIONS

W500 X D500 X H450 MM

APPEARS ON PAGES	20, 29
------------------	--------



# STOOLS

## RACHEL



DIMENSIONS	
RACHEL S	Ø500 X H450 MM
RACHEL L	Ø920 X H450 MM
<hr/>	
APPEARS ON PAGES	99, 103

## LOW



DIMENSIONS	
	Ø470 X H480 MM
<hr/>	
APPEARS ON PAGES	92, 96, 127, 128

# BENCHES

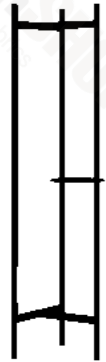
## COLBERT



DIMENSIONS	
	W1540 X D450 X H450 MM
<hr/>	
APPEARS ON PAGES	70, 73, 74

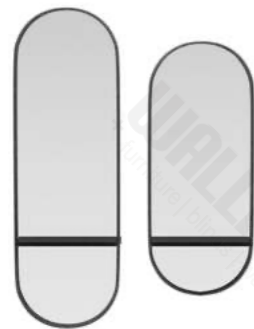
# CASEGOODS

NEW



## RALPH

DIMENSIONS	W375 X D340 X H1500 MM
APPEARS ON PAGES	6, 16, 70, 76, 77



## CLEO

DIMENSIONS	
CLEO L	W620 X D170 X H1920 MM
CLEO S	W620 X D170 X H1520 MM
APPEARS ON PAGES	92, 96



## MANO

DIMENSIONS	
COFFEE TABLE	Ø800 X H310 MM
SIDE TABLE	Ø400 X H560 MM
APPEARS ON PAGES	79, 80, 105, 106, 108, 109, 142, 143



## PANTON

DIMENSIONS	
COFFEE TABLE	W1100 X D1100 X H350 MM
SIDE TABLE	W500 X D500 X H510 MM
APPEARS ON PAGES	45, 46, 49, 98, 101, 102, 126, 130, 131

# CASEGOODS

## INSIDE

DIMENSIONS	
COFFEE TABLE	W1050 X D600 X H350 MM
SIDE TABLE LOW	Ø700 X H345 MM
SIDE TABLE TALL (WOOD TOP)	Ø400 X H511 MM
SIDE TABLE TALL (METAL TOP)	Ø400 X H500 MM
APPEARS ON PAGES	12, 21, 22, 32-41, 93-97, 110-115, 116-119, 136-139



## TAYLOR

DIMENSIONS	
BEDSIDE TABLE	W610 X D500 X H500 MM
CHEST OF DRAWERS	W1500 X D500 X H850 MM
TALLBOY	W610 X D600 X H1200 MM
APPEARS ON PAGES	87, 89



## GRAZI

DIMENSIONS	W600 X D500 X H530 MM
APPEARS ON PAGES	83, 85





# ACCESSORIES

NEW



## ADA

DIMENSIONS\* 500 X 500 MM

APPEARS ON PAGES 32, 41, 104, 106, 109, 111, 113, 114, 115, 116, 119, 127, 129, 131, 132

\*AVAILABLE IN VARIOUS COLOR SCHEMES

dk